

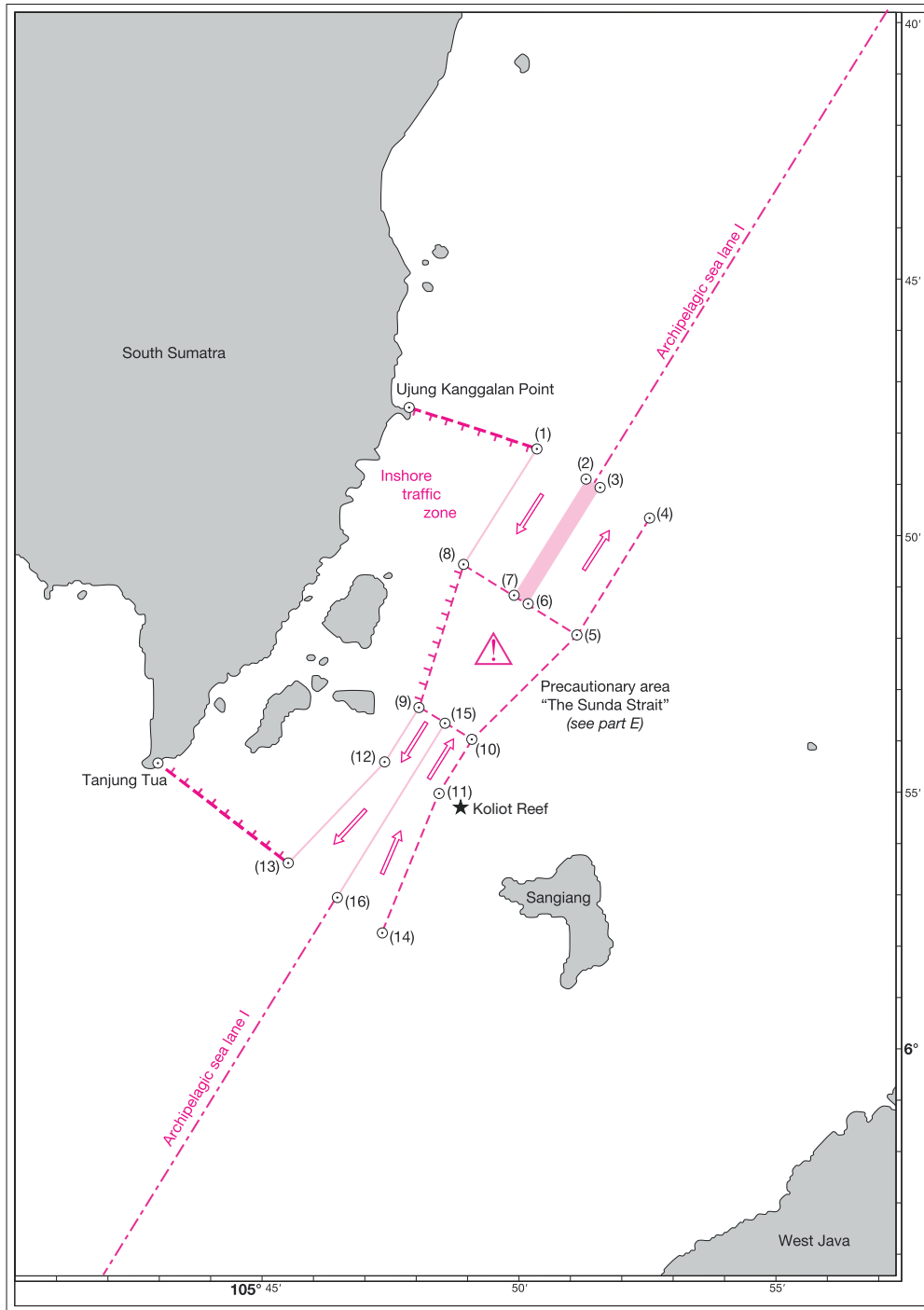
SHIPS' ROUTEING

2019 EDITION

Erratum

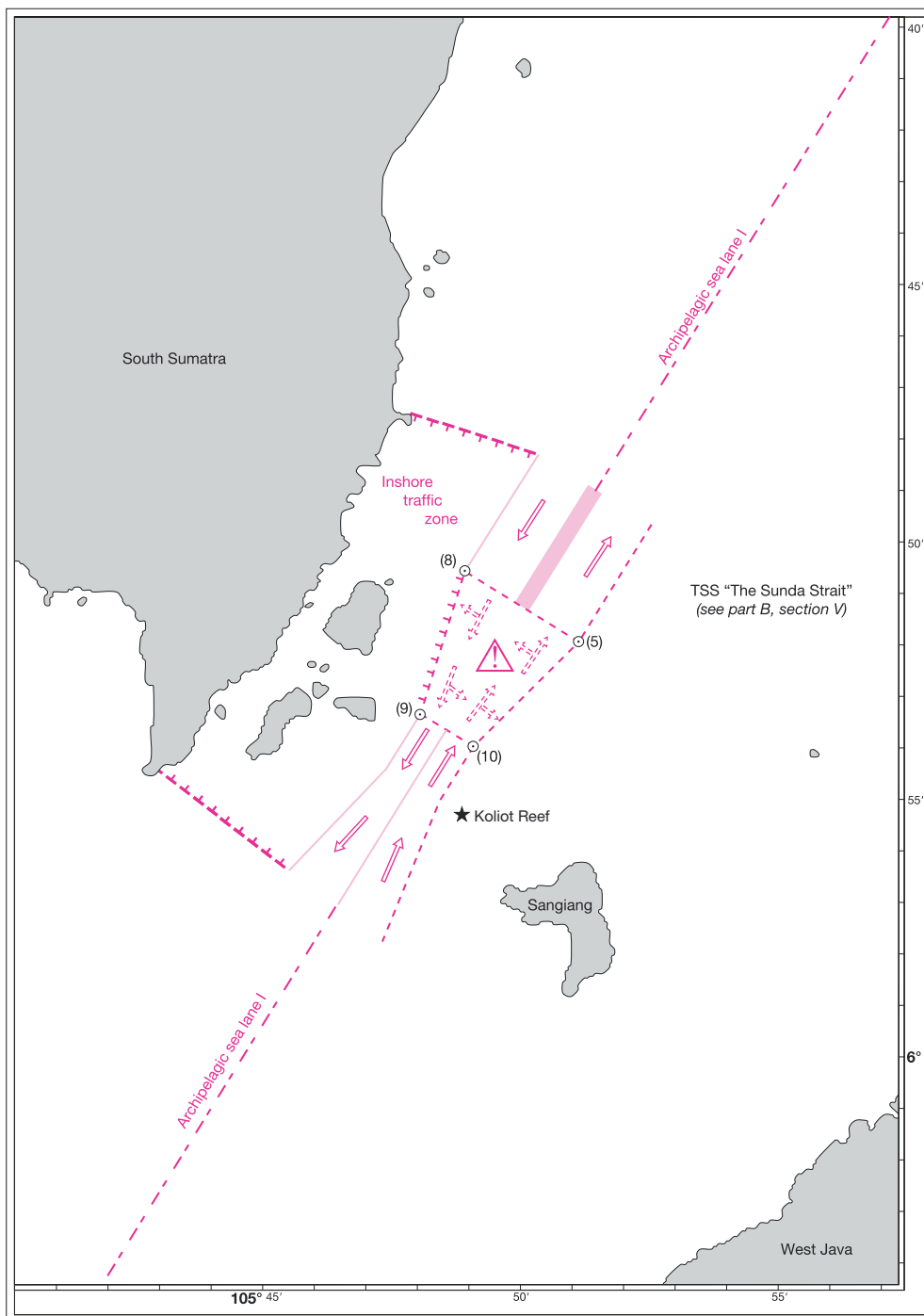
March 2020

In Part B, on page V/10-2, the chartlet "IN THE SUNDA STRAIT" is replaced by the following:



IN THE SUNDA STRAIT

In Part E, on page 32, the chartlet “**PRECAUTIONARY AREA WITH RECOMMENDED DIRECTIONS OF TRAFFIC FLOW IN THE SUNDA STRAIT**” is replaced by the following:



PRECAUTIONARY AREA WITH RECOMMENDED DIRECTIONS OF TRAFFIC FLOW IN THE SUNDA STRAIT