



EXAMINATION QUESTION PAPER  
MEASUREMENT & INSTRUMENTATION

- This question paper consist 06 questions.
- Answer any five (05) Questions.

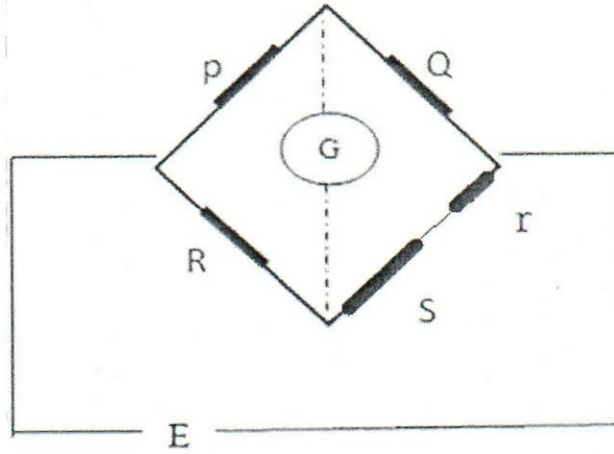
Date: 2023.03.19

Pass mark 50%

Time allocated: 03Hrs

01. a. List types of electrical measuring instruments? (03 Marks)  
b. Briefly explain above instruments with examples. (09 Marks)  
c. Describe the following torques in brief. (08 Marks)  
    i. Deflecting torque:  
    ii. Controlling torque:  
    iii. Damping torque:
02. a. A permanent magnet moving coil instrument gives full-scale deflection with 5mA and has a resistance of  $5\Omega$ . Calculate the resistance of the necessary components in order that the instrument may be used as  
    i. a 2A ammeter (07 Marks)  
    ii. a 100V voltmeter (07 Marks)  
b. List the advantages and disadvantages of moving coil instrument. (06 Marks)
03. a. What are the types of moving iron instruments? (04 Marks)  
b. Briefly explain them. (12 Marks)  
c. List the sources of errors of moving iron instrument. (04 Marks)
04. a. A moving iron instrument gives full scale deflection with 200V. It has a coil of 20000 turns and a resistance  $2000\Omega$ . If the instrument is used as an ammeter to give full-scale deflection at 10A, calculate the number of turns required. (04 Marks)  
b. How do you extend the range of moving iron AC ammeter & voltmeter? (08 Marks)  
c. i. Resistance of the ammeter is high or low. Justify your answer. (04 Marks)  
    ii Resistance of the voltmeter is high or low. Justify your answer. (04 Marks)
05. a. Draw the synchronous scope arrangement with windings diagram. (10 Marks)  
b. How do you decide the frequency of the incoming alternator is high or low? (06 Marks)  
c. What are the types of synchronous scope? (04 Marks)

06. a. Explain the balanced condition of DC wheatstone bridge circuit with suitable diagram. (08 Marks)
- b. In Wheatstone bridge  $P = 4\Omega$ ,  $Q = 5\Omega$ ,  $R = 12\Omega$  and  $S = 7\Omega$ . How much resistance must be put in series to the resistance(r) $S$  to balance the bridge. (12 Marks)



Faculty of Marine Engineering  
Department of Marine Electrical Engineering  
PRE SEA TRAINING COURSE FOR ELECTRO TECHNICAL RATING.  
COURSE CODE : EED -2465/ B015 & 016/ M1

EXAMINATION QUESTION PAPER  
ELECTRICAL THEORY

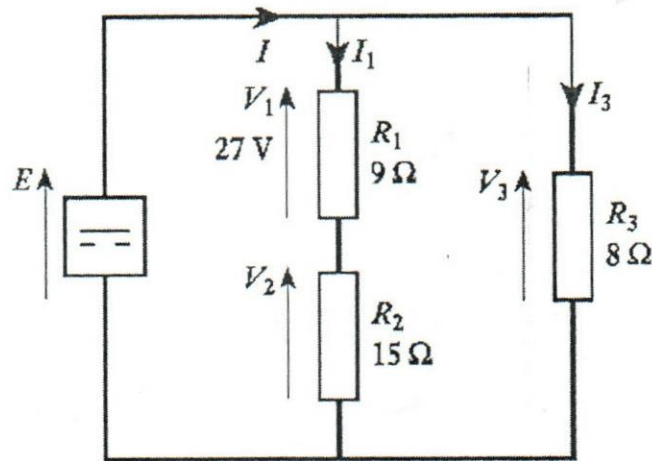
- This question paper consist 06 questions.
  - Answer all six questions.
- Date: 2023.03.14.

Pass mark 50%

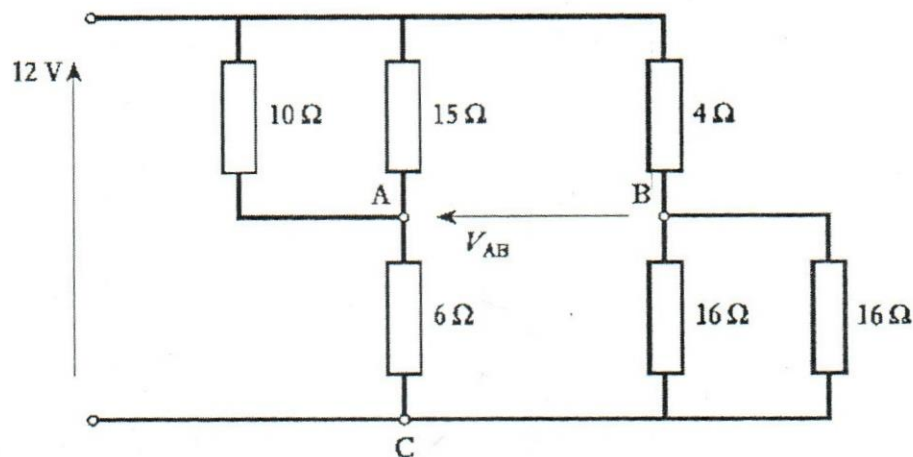
Time allocated: 03Hrs

01.

- State Kirchoff's Current Law and Voltage Law. (06 Marks)
- Given the network shown in Fig. below, determine  $I_1$ ,  $E$ ,  $I_3$  and  $I$ . (07 Marks)



- Determine  $V_{AB}$  in the network shown in Figure bellow (07 Marks)



02.

- A 230 V lamp is rated to pass a current of 0.26 A. Calculate its power output. If a second similar lamp is connected in parallel to the lamp, calculate the supply current required to give the same power output in each lamp. (05 Marks)

- b. Assuming the lamps to have reasonably constant resistance regardless of operating conditions, estimate the power output if the lamps are connected in series. (05 Marks)
- c. A current of 3 A flows through a  $10\ \Omega$  resistor. Find: the power developed by the resistor and the energy dissipated in 5 min. (05 Marks)

03.

- a. How can the domain theory of magnetism be verified? (04 Marks)
- b. What three methods can be used to increase the strength of electromagnet? (02 Marks)
- c. Explain power in balanced three phase loads (04 Marks)
- d. Three resistances of  $20\ \Omega$  each are Y-connected to a 240-V 3- $\phi$  line operating at a PF of 0.8. Find the (a) current through each resistance, (b) line current, and (c) power taken by the three resistances. (05 Marks)

04.

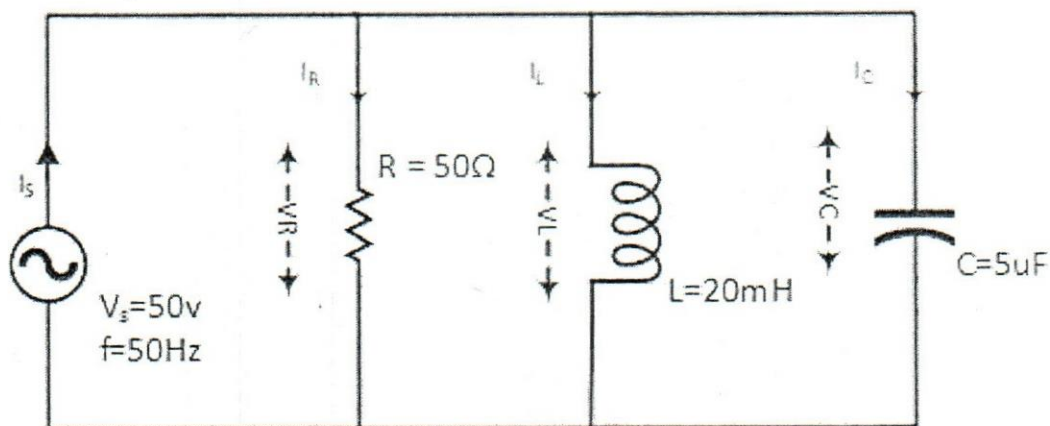
- a. Explain generating of A.C with diagram of single coils AC generator. (07 Marks)
- b. The equation of an AC voltage is given as  $V_s = 170 \sin(376.8t)$  Volts. Determine
- Maximum Value (02 Marks)
  - RMS value (02 Marks)
  - Frequency (02 Marks)
  - Period (02 Marks)

05.

- a. Explain decoupling circuit with suitable diagram (05 Marks)
- b. Explain coupling circuit with suitable diagram (05 Marks)

06. Determine following for the provide circuit below

- Current through resistor,  $I_R$  (02 Marks)
- Current through Inductor,  $I_L$  (04 Marks)
- Current through Capacitor,  $I_C$  (04 Marks)
- True power (Active power,  $P_T$ ) (03 Marks)
- Reactive power ( $P_{\text{Reactive}}$ ) (05 Marks)
- Apparent Power ( $P_{\text{Apparent}}$ ) (05 Marks)
- Power Factor (P.F) (02 Marks)



Faculty of Marine Engineering  
Department of Marine Electrical Engineering  
PRE SEA TRAINING COURSE FOR ELECTRO TECHNICAL RATING.  
COURSE CODE : EED-2465/ B015 & 016/MI



EXAMINATION QUESTION PAPER  
Computer Knowledge

- This question paper consists of 02 parts and 05 questions.
- Part A - 01 question is compulsory.
- Part B - Answer Any other 03 questions.

Date: 2023.03.18

Pass Marks 50%

Time allocated: 03 Hrs.

Part I

01.

- a. What can we identify as Raw Materials? (4 x 10 = 40 Marks)
- Data
  - Information
  - Details
  - Files
- b. What is an example for ICT application in health sector?
- ATM machines
  - e-Channeling
  - Web conference meetings
  - ECG Scans
- c. What is NOT an example for I/O (Input and Output) device?
- Touch screen monitor
  - Scanner
  - Computer mouse
  - Printer
- d. Permanent memory of the computer is known as \_\_\_\_\_?
- Random Access Memory
  - Read Only Memory
  - Hard Disk Drive
  - USB Pen Drive
- e. Controlling hardware, software and other components of the computer done by \_\_\_\_\_ part of the CPU.
- Cache memory
  - ALU
  - CU
  - Hard Drive

- f. Average data reading speed of SSD hard drive is \_\_\_\_\_?
- 150Mbps
  - 650MBps
  - 650Mbps
  - 3500MBps
- g. What is the best MS office application for sums and calculations?
- MS Word
  - MS PowerPoint
  - MS Access
  - MS Excel
- h. What is NOT an example for desktop Operating System?
- Android
  - Microsoft Windows
  - MacOS
  - Linux
- i. Identify the cloud storage which owns by Apple Incorporation company.
- OneDrive
  - Google Drive
  - iCloud
  - Samsung Cloud
- j. What is the smallest storage device among below devices?
- Pen Drive
  - Compact Disk (CD)
  - Floppy Drive
  - Memory card

## Part 2

02.

- State the difference between Data and Information with examples. (04 Marks)
- Write down 3 applications of ICT and describe one of it. (05 Marks)
- What are the basic functionalities of a computer? (04 Marks)
- State the difference between CU and ALU of CPU. (04 Marks)
- What are 3 major components need to operate a computer? (03 Marks)

03.

- What are I/O devices? (03 Marks)
- Provide 2 examples with its' purpose for each I/O device. (04 Marks)
- Identify the difference between RAM and ROM. (04 Marks)
- Provide 3 techniques we can use to make speed up a computer. (06 Marks)
- Identify 3 types of ports we can use for video transfers. (03 Marks)

04

- a. What are main 2 types of softwares? (02 Marks)
- b. What is an Operating System? (03 Marks)
- c. Write down 5 components of an Operating System. (05 Marks)
- d. Provide 2 examples for each desktop and mobile operating systems. (04 Marks)
- e. What is an Antivirus software? Provide 2 anti-virus softwares in the market. (04 Marks)
- f. What are symptoms of a computer virus? (02 Marks)

05.

- a. How to insert a page border to a MS word file? Write down steps. (04 Marks)
- b. Where we use MS PowerPoint? (02 Marks)
- c. How to add an animation to a PowerPoint presentation? (02 Marks)
- d. Provide another name for MS Excel worksheet? (02 Marks)
- e. Write MS Excel formulas for given sums using below table. (2 x 5 = 10 Marks)

	A	B	C	D	E	F	G	H	I
1		IT	Maths	Science	Religion	History	Tech.	Health	English
2	Amal	25	45	66	33	47	86	12	47
3	Chamara	36	48	56	26	43	14	23	98
4	Namal	13	36	69	98	75	45	22	36
5	Sampath	14	89	66	44	12	36	11	47
6	Kalpa	78	64	58	55	49	14	69	07
7	John	48	69	63	44	81	36	63	41

- i. Calculate total marks for Namal.
- ii. Calculate Average marks for science.
- iii. Find the maximum value of the data set.
- iv. Calculate the minimum marks for Kalpa and John.
- v. Find the number of subjects ONLY using 1<sup>st</sup> row.



Faculty of Marine Engineering  
Department of Marine Electrical Engineering  
PRE SEA TRAINING COURSE FOR ELECTRO TECHNICAL RATING.  
COURSE CODE: EED -2465/ B015 & 016 /M1

Library

00051



EXAMINATION QUESTION PAPER  
BASIC ELECTRICAL POWER & MACHINES

- This question paper consist of 07 questions.
- Answer Q 01 and any other 05 questions.

Pass mark 50%

Date: 2023.03.18

Time allocated: 03Hrs

01. a. Draw Electrical Power circuit diagram of Direct on line three phase Motor starter and clearly name each components and functions (09 Marks)
- b. Draw Electrical control circuit diagram of Direct on line three phase Motor starter and clearly name each component (Include Indicators for Mains Power, Motor run "ON", OCR fault in your drawing) (11 Marks)
02. a. Draw diagram of D.C Series, shunt and Compound motors and name all components of each motor (06 Marks)
- b. List one application of D.C series & two applications of D.C shunt motors? (03 Marks)
- c. How would you reverse the direction of rotation of dc shunt motor? Explain with the help of sketch and terminal marks (04 Marks)
- d. Briefly Explain the purpose of starting resistance for DC motor. (03 Marks)
03. a. Which DC motor has the same thickness of Field winding as its Armature winding & terminals. Explain reason for the same thickness winding (03 Marks)
- b. Sketch and explain armature reaction of D.C. Motor. (04 Marks)
- c. Explain disadvantages by armature reaction (04 Marks)
- d. Explain ways to minimize the effect of Armature reaction? (05 Marks)
04. a. Sketch construction of power Transformer and name each sections (04 Marks)
- b. What are the general applications of Power transformer (03 Marks)
- c. Sketch equivalent circuit of transformer and name each sections (05 Marks)
- d. Explain method to reduce eddy current loss of power transformer. (04 Marks)



05. a. Explain purposes of Power Transformer & Instrument transformer (06 Marks)
- b. Specification of Single-phase Transformer given as 11 KVA 60 Hz-440/230V.
- i. Calculate rated current of Primary and secondary. (05 Marks)
  - ii. Turns ratio (05 Marks)
06. a. List two different types Enclosures of three phase Motors (04 Marks)
- b. Compare Squirrel cage rotor & Wound rotor. (08 Marks)
- c. List four names of three phase motor starters (04 Marks)
07. a. List Minimum Protections required for a Three phase motor (06 Marks)
- b. Write six Technical parameters printed on the name plate of 3 phase motor (06 Marks)
- c. Why all fins at the external motor surface to be maintained clean state (02 Marks)
- d. What are the purposes of cable glands, rubber packing at the motor power Terminal box and cover (02 Marks)

Faculty of Marine Engineering  
Department of Marine Electrical Engineering  
PRE SEA TRAINING COURSE FOR ELECTRO TECHNICAL RATING  
COURSE CODE : EED-2465/ B013 & 014/M2



EXAMINATION QUESTION PAPER  
Computer Knowledge, PC - Networking / Interfacing

- This question paper consists of 02 parts and 05 questions.
- Part A - No. 1 question is compulsory.
- Part B - Answer Any other 03 questions.

Date: 2023.03.14

Pass mark 50%

Time allocated: 03Hrs

Part - A

01. Write the correct answer number answer book.

(04 Marks x 10)

- In which ICT application, MRI and CT Scans use?
  - Military
  - Health
  - Education
  - e-Commerce
- Identify the main input device.
  - Mouse
  - Scanner
  - Keyboard
  - Barcode reader
- Which component has its own (Separate) power supply?
  - Read Only Memory (ROM)
  - Random Access Memory (RAM)
  - Central Processing Unit (CPU)
  - Arithmetic & Logic Unit (ALU)
- \_\_\_\_\_ works as a temporary memory of the computer.
  - Read Only Memory (ROM)
  - Hard Disk Drive (HDD)
  - Floppy Disk Drive (FDD)
  - Random Access Memory (RAM)
- What is not being a basic functionality of the computer?
  - Input Data
  - Process Data
  - Output Information
  - Data Analysis

- f. Processed Data also known as \_\_\_\_\_.
- Information
  - Raw Materials
  - Details
  - Digital Signal
- g. How many computers are minimum required for a computer network?
- 1
  - 2
  - 3
  - 4
- h. What is the main purpose of the Modem?
- Working as an alternative to NIC.
  - Modulating and Demodulating Analog Signals to Digital Signals and Digital Signals to Analog Signals.
  - Ensure the security of the computer network.
  - Split the network between a few computers.
- i. How many ports are in a standard Network Hub?
- 4/12
  - 24/28
  - 32/28
  - 48/52
- j. Set of Rules of a Computer Network known as \_\_\_\_\_?
- Network Regulations
  - Network Hierarchy
  - Network Protocol
  - Network Policies

Part - B

- 02:
- Briefly explain where we use MS Word in real life. (04 Marks)
  - Write down how to add an animation to a MS PowerPoint Presentation. (04 Marks)
  - What are Spreadsheet and Excel formulas? (04 Marks)
  - Write down what is the formula for each function (08 Marks)
    - Addition (Total)
    - Minimum Value
    - Maximum Value
    - Count of a range

03

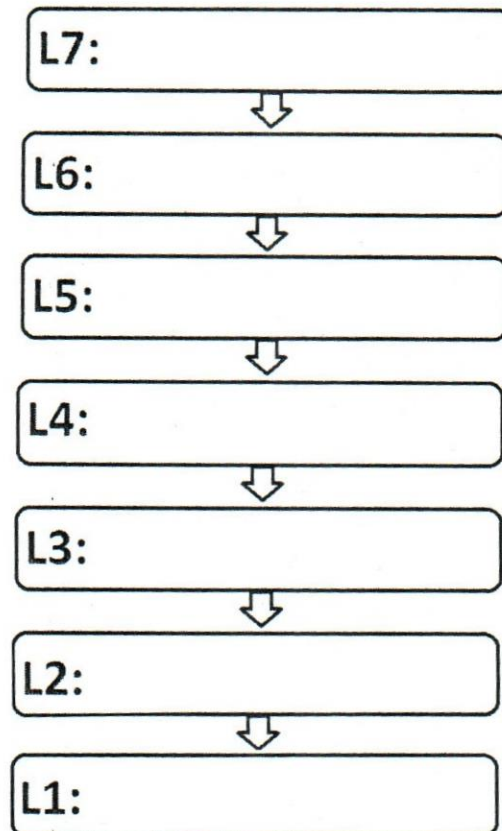
- Define "Computer Network". (03 Marks)
- Identify 3 types of cable we mostly use in networking. (03 Marks)
- What are the basic components of a computer network? (05 Marks)
- Write down 2 differences between Hub and Switch (04 Marks)
- State 4 basic components of a network (05 Marks)

04

- Identify 3 types of networks according to the size (Name, size and example for each) (09 Marks)
- What is the difference between Network Topology and Network Architecture? (01 Mark)
- Draw the diagrams for any 2 network topologies you have learnt, and provide an advantage and disadvantage for each topology. (10 Marks)

05

- Fill each layer according to the correct order of OSI model. (07 Marks)



- Write down 2 types of Network Architectures with advantages and disadvantages. (04 Marks)
- What are the factors we have to consider before implementing a network? (03 Marks)
- State the difference between MAC address and IP address. (06 Marks)



Faculty of Marine Engineering  
 Department of Marine Electrical Engineering  
 PRE SEA TRAINING COURSE FOR ELECTRO TECHNICAL RATING.  
 COURSE CODE : EED-2465/B13 & 014/M2



EXAMINATION QUESTION PAPER  
 BASIC ELECTRICAL POWER & MACHINES

- This question paper consist 06 questions.
  - Answer **any (05) Five** questions.
- Date : 2023.03.13  
 Time allocated : 03Hrs
- Pass mark 50%

01. a. Draw the simple block diagram with main components of three phase supply for a three-phase motor (08 Marks)
- b. List the types of motors commonly used on board ship (04 Marks)
- c. What are the main on-board applications of three phase motors? (04 Marks)
- d. Write the names of low voltage three phase induction motors with their applications (04 Marks)
02. a. What are the four types of motor enclosures available in industry? (04 Marks)
- b. Briefly explain following motor name plate information.
- i. Horsepower (HP) or Watts(W) (03 Marks)
  - ii. Full load amp. Rating(A) (03 Marks)
  - iii. Voltage(V) (02 Marks)
  - iv. CT / VT (02 Marks)
  - v. Duty (02 Marks)
- c. Write the starter methods for three phase motors. (04 Marks)
03. a. What are the exciting methods in alternators? (04 Marks)
- b. Draw the neat block diagrams with components for followings
- i. Self excited brushless alternator (06 Marks)
  - ii. Static transformer excitation alternator (07 Marks)
  - iii. State the main functions of AVR (03 Marks)
04. Draw the neat three phase circuit diagrams (power circuit and control circuit) for followings.
- a. DOL starter (10 Marks)
  - b. Auto transformer starter (10 Marks)
05. a. What is the purpose to request low voltage shore supply (not AMP) in generally? (05 Marks)
- b. Draw the basic block diagram for shore power arrangement (07 Marks)
- c. Briefly explain the effects of followings
- i. If shore voltage increases and decreases (04 Marks)
  - ii. If shore frequency increases and decreases (04 Marks)

06. a. State the conditions for synchronizing an alternator with live bus bar (04 Marks)
- b. What are the synchronizing methods? (05 Marks)
- c. Draw the neat circuit diagrams for above any two methods. (11 Marks)



Faculty of Marine Engineering  
Department of Marine Electrical Engineering  
PRESEA TRAINING COURSE FOR ELECTRO TECHNICAL RATING.  
COURSE CODE : EED -2465/ B013 & 014 /M2

FINAL EXAMINATION QUESTION PAPER  
MARINE ENGINEERING KNOWLEDGE

- This question paper consists 06 questions.
- Answer only 05 questions.

Date: 2023.03.07

Pass mark 50%

Time allocated: 03Hrs

01. Write short notes of the followings.

- Bunkering
- Sounding
- Gross Tonnage
- Sewage plant
- FWG
- OWS
- Filter Drier
- Demister
- Double Bottom
- Mooring winch.

(20 Marks)

02. a. Usage of air compressor.

(07 Marks)

b. Write down 5 safety devices of air compressor.

(05 Marks)

c. Air bottle not coming up/topping up. What are the reasons.

(08 Marks)

03. a. Explain 4/2 stroke cycles with suitable diagram.

(10 Marks)

b. Named 3 differences between 2 stroke and 4 stroke.

(06 Marks)

c. Name most popular two kinds of modern engine brands.

(04 Marks)

04. a. What are the purpose of steam in a ship.

(06 Marks)

b. What is the meaning of a boiler mounting? Give 06 examples

(06 Marks)

c. What are the boiler alarms. Give 08 examples

(08 Marks)

05. a. Draw and named Marine Sewage plant. (16 Marks)
- b. What are the two bacteria in the sewage plant. (04 Marks)
06. Reference with Reefer Refrigeration system.
- a. Draw a Vapor compression Refrigeration Cycle schematic diagram with the followings: (12 Marks)
- i. Main four (04) components.
  - ii. Receiver
  - iii. Filter Drier
  - iv. Quench valve
  - v. King Valve
  - vi. Suction Service Valve.
  - vii. Discharge Service Valve
  - viii. Equalizer Line
  - ix. Moisture Indicator
- b. What are the 02 common breakdowns that you find on board in reefer container units? (02 Marks)
- c. What is the meaning of HVAC & basic principles for HVAC? (06 Marks)



Faculty of Marine Engineering  
 Department of Marine Electrical Engineering  
 PRE SEA TRAINING COURSE FOR ELECTRO TECHNICAL RATING.  
 COURSE CODE : EED -0465/ B012/M2



REPEAT EXAMINATION QUESTION PAPER  
 MARINE ENGINEERING KNOWLEDGE

- This question paper consists 06 questions.
- Answer only 05 questions.

Date: 2022.12.16

Pass mark 50%

Time allocated: 03Hrs

01. a. With a diagram explain vapor compression cycle used in shipboard refrigeration systems (08 Marks)
- b. Write short notes on the following? (12 Marks)
- i. Filter Dryer      ii. Condenser      iii. Back Pressure Valve      iv. Expansion Valve.
02. a. State the name and function of FOUR deck machineries fitted onboard a ship? (05 Marks)
- b. What are the type of hatch covers used onboard a ship. (06 Marks)
- c. Explain the main function of a Hatch Cover, how it is provided (09 Marks)
03. a. State with reasons why steam need to be generated onboard ship (05 Marks)
- b. State FIVE boiler mountings and explain their functions? (10 Marks)
- c. Explain two types of Boilers used in shipboard practice and their differences? (05 Marks)
04. a. Explain what benefits ship owner get by installing a Fresh Water generator onboard a ship (02 Marks)
- b. With an aid of a diagram explain the function of a Evaporative type Fresh Water generator used onboard a ship. (12 Marks)
- c. State what type of filters used in a shipboard fresh water system (06 Marks)
05. a. Explain the types and functions of the ships trade in the oceans globally. (10 Marks)
- b. Draw a cross section of a Container ship naming all the parts (10 Marks)
06. a. Explain why sewage Treatment plant is required in a ship (04 Marks)
- b. With a diagram explain the function of a sewage treatment plant (08 Marks)
- c. Explain what happens if Air Blower stops functioning (08 Marks)